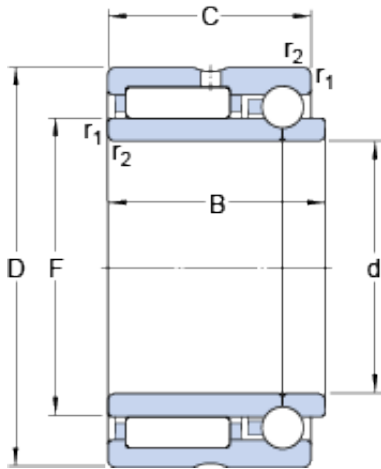




EYA Bearing Roller Industry Co.,Ltd



NKIB 5912 Bearing 2D drawings and 3D CAD models

SKF NKIB 5912 cylindrical roller bearings

Bearing No. NKIB 5912

| | |
|---|-------------|
| Size | 85x60x38 mm |
| Bore Diameter | 85 mm |
| Outer Diameter | 60 mm |
| Width | 38 mm |
| d | 60 mm |
| D | 85 mm |
| B | 38 mm |
| C | 34 mm |
| F | 68 mm |
| r _{1,2} - min. | 1 mm |
| d _a - min. | 65 mm |
| D _a - max. | 80 mm |
| r _a - max. | 1 mm |
| Basic dynamic load rating, radial direction - C | 60.5 kN |
| Basic static load rating, radial direction - C ₀ | 114 kN |
| Basic dynamic load rating, axial direction - C | 9.6 kN |
| Basic static load rating, axial direction - C ₀ | 18 kN |
| Fatigue load limit, radial direction - P _u | 14.3 kN |
| Fatigue load limit, axial direction - P _u | 0.77 kN |
| Reference speed | 6000 r/min |
| Limiting speed | 6700 r/min |
| | |



EYA Bearing Roller Industry Co.,Ltd

| Category | Roller Bearings |
|---|-----------------|
| Inventory | 0.0 |
| Manufacturer Name | SKF |
| Minimum Buy Quantity | N/A |
| Weight / Kilogram | 0.62 |
| EAN | 7316577710086 |
| Product Group | B04144 |
| r _{1,2} min. | 1 mm |
| d _a min. | 65 mm |
| D _a max. | 80 mm |
| r _a max. | 1 mm |
| Basic dynamic load rating, radial direction C | 60.5 kN |
| Basic static load rating, radial direction C ₀ | 114 kN |
| Basic dynamic load rating, axial direction C | 9.58 kN |
| Basic static load rating, axial direction C ₀ | 18 kN |
| Fatigue load limit, radial direction P _u | 14.3 kN |
| Fatigue load limit, axial direction P _u | 0.77 kN |
| Mass bearing | 0.59 kg |